

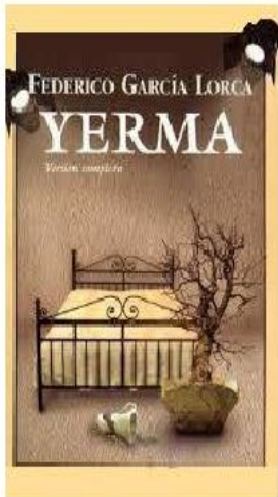
About Chorlton Players...

We are a community theatre group established in 1963. Our low ticket prices reflect the fact that we are a not for profit group. We put on 5 productions a season, including our pantomime in the New Year and a comedy review in early summer. We meet and rehearse at The Spread Eagle every Monday and Wednesday evening and we always welcome new members. You don't need any experience and it is not all about the acting. We are always in need of all the other talents it takes to put on Productions: backstage, costumes, front of house, set-building, audio-visuals, make-up, advertising etc.

WOULD YOU LIKE TO JOIN US? If you are interested in joining Chorlton Players just go to our website: www.chorltonplayers.co.uk and email our membership secretary for further information at enquiries@chorltonplayers.com, come along to one of our rehearsals, or come and chat to us after this performance.

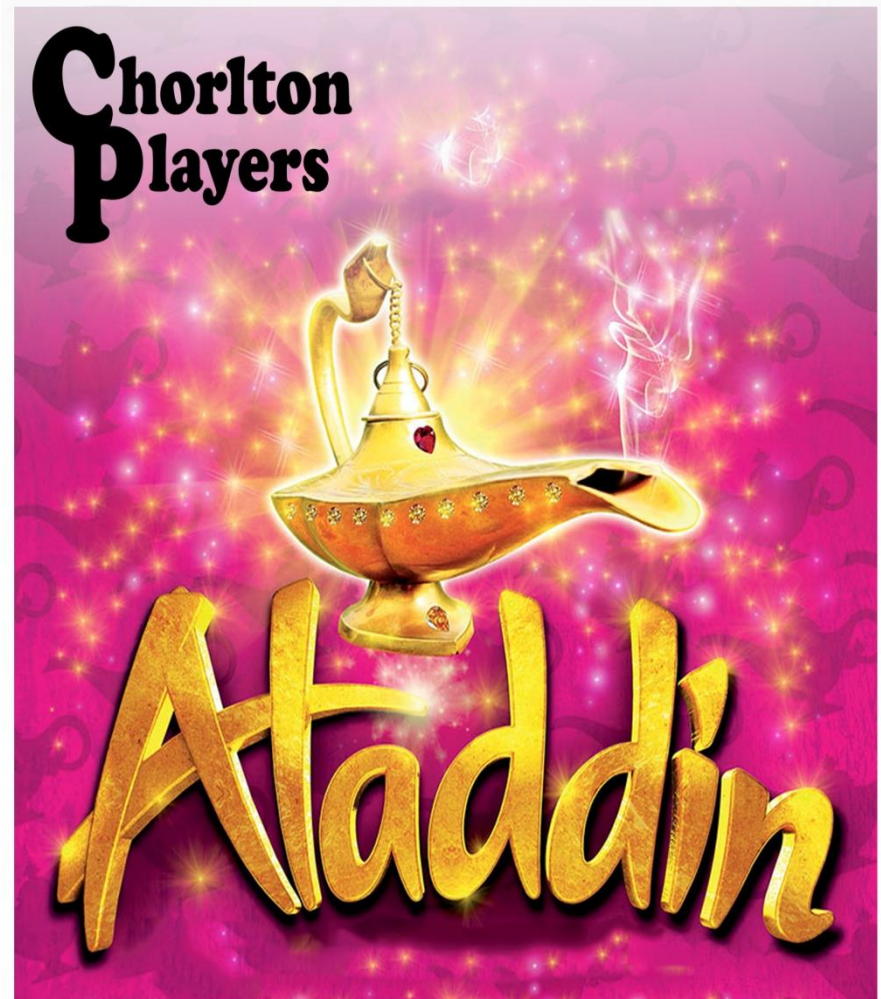
Keep in touch with us via our e-Newsletter...

To subscribe, just email news@chorltonplayers.com headed "Sign me up to the CP e-News Service". You can unsubscribe instantly any time. We promise only to send you our newsletter when we have something worth announcing (no spam here!) & we promise to keep your details confidential... **and keep up with us on Facebook and @chorltonplayers on Twitter too!**



Coming soon....
Federico García Lorca's
YERMA

March 16th - 18th 2017
Tickets available online
from February 1st



St. Werburgh's Hall,
St. Werburgh's Road,
Chorlton-cum-Hardy,
Manchester,
M21 0TL

Curtain up
Jan 12 - 14th 2017
at 7.30pm
&
Matinee Jan 14th at 2pm

Tickets: £6 Adults, £4 Concessions

www.chorltonplayers.com

Many of you will be familiar with the 1992 Disney adaptation of Aladdin, but the tale of 'Aladdin and his Wonderful Lamp' originates as a story in the epic '1001 Nights' or 'Arabian Nights'. It began its existence as a pantomime at Covent Garden in 1788 and has been a popular subject for pantomime for over 200 years. This traditional family pantomime is set in China and tells the story of a poor boy called Aladdin, living with his laundress mother, who is captivated and mesmerized by the beautiful Princess Jasmine. Aladdin gets caught up in the cunning and evil Abanazer's attempts at world domination as he is sent to search for a magical lamp that only he can seek out. When Aladdin finds the lamp and rubs it, the story and magic unfolds...

When I joined Chorlton Players in the Spring of 2015 to improve my acting skills, I never dreamed that I would ever be directing a panto. When the opportunity arose to direct, I decided that a panto was for me as I love the laugh out loud comedy, the bright colours, sparkling costumes and the array of songs and dancing involved. Aladdin has always been one of my favourites and I have fond memories of it ever since I played Jasmine in my annual primary school production at the age of 9.

I would like to take this opportunity to thank an amazing cast and team for making this such a memorable production. Your efforts and hard work has certainly paid off and it has been a privilege to work with such incredible and dedicated people.

On a final note, thank you to you the audience for your support. So sit back and join Widow Twankey and her family in Old Peking as we transport you into an enchanting world of love and mystery, magical lamps, kung fu fighting policemen and dancing skeletons. Prepare to boo, hiss, cheer and sing! Will Widow Twankey find romance? Will Abanazer rule the world? Will Aladdin finally marry Princess Jasmine? All will be revealed

Suzanne Clare

Director

Cast & Crew

Aladdin	Emma Thompson
Princess Jasmine	Lauren Murphy
Widow Twankey	Stuart Cannell
Wishee Washee	Charlie De Santis
Officer Hu	Rachel Chadwick
Officer Mi	Jennifer Archer
The Emperor	Graham Phythian
The Vizier	Jonathan King
Abanazer	Rohan Shenoy
The Slave of the Ring	Loz Foster
The Genie of the Lamp	Gerard Devney
So-Shi	Samantha Wright
Stage Manager	Heather Lee
Peking Villagers	Isabella Danson Chappell, Sienna Smith, Holly Jackson, Stephanie Fernando, Chloe Andrews



Director	Suzanne Clare
Producer	Stephen Lewyckyj
Stage Manager	Emma-Jane Brazier
Stage Crew	Robert Hall, Paul Grace, Stephen O'Brien
Props Manager	Wayne Gilbert
Costumes	Celestina Mahović
Lighting	Simon Parkin
Sound	Adam Ion
Tech Manager	Annie Wallace
Children's Choreography	Anne Finnegan / Jean Hall
Photography	Barry Pritchard
Front of House	Matron and helpers

Thanks to the Anne Finnegan Dance and Theatre School and to various other members of Chorlton Players who have helped along the way.

Blind Date scene written by Graham Phythian.