

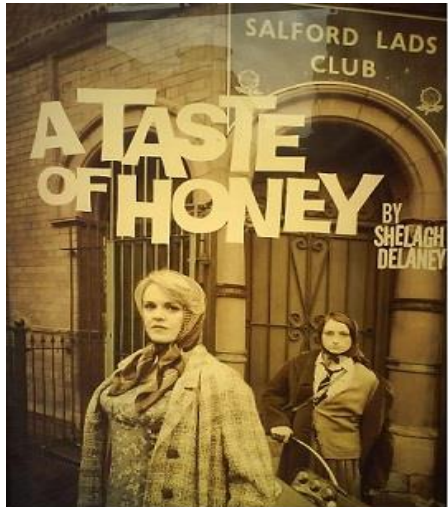
About Chorlton Players...

We are a community theatre group established in 1963. Our low ticket prices reflect the fact that we are a not for profit group. We put on five productions a season, including our pantomime in the New Year and a comedy review in early summer. We meet and rehearse at The Spread Eagle every Monday and Wednesday evening and we always welcome new members. You don't need any experience and it is not all about the acting. We are always in need of all the other talents it takes to put on productions: backstage, costumes, front of house, set-building, audio-visuals, make-up, advertising etc.

WOULD YOU LIKE TO JOIN US? If you are interested in joining Chorlton Players just go to our website: www.chorltonplayers.co.uk and email our membership secretary for further information at enquiries@chorltonplayers.com, come along to one of our rehearsals, or come and chat to us after this performance.

Keep in touch with us via our e-Newsletter...

To subscribe, just email news@chorltonplayers.com headed "Sign me up to the CP e-News Service". You can unsubscribe instantly any time. We promise only to send you our newsletter when we have something worth announcing (no spam here!) and we promise to keep your details confidential... **and keep up with us on Facebook and @chorltonplayers on Twitter too!**



Coming Soon...
March 15th-17th
2018
Tickets available
online from
February 1st

Chorlton Players *A Pantomime*



**St. Werburgh's Hall,
St. Werburgh's Road,
Chorlton-cum-Hardy,
Manchester,
M21 0TL**

**Curtain up
Jan 18th - 20th 2018
at 7.30pm
&
Matinee Jan 20th at 2pm**

Tickets: £7 Adults, £4 Concessions
www.chorltonplayers.com

A tale as old as time, well around 4000 years or so. Beauty and the Beast is a story that originated before print culture. It goes back to storytelling cultures where there was no adult entertainment and is a story that sent a beautiful message about the power of love and the importance of valuing character. As with many fairy tales that have been handed down through the years, the original story is not suitable for children, it is terrifying and has many hidden secrets and messages.

Beauty and the Beast is a love story with a difference.

Modern day has taken the tale and tempered it so that it is suitable for diverse audiences and here we see the story play out with all the fun of a traditional pantomime.

You will follow the fortune of the spoiled and arrogant Prince True Heart, who is turned into a hideous Beast by a rather annoyed Fairy Bover Boots when he refuses her shelter in his castle during a storm.

As Bover casts her spell, she presents The Beast with a single red rose and tells him that he must find true love before the last petal falls or he will remain a beast forever.

Luckily, the delightful Fairy Goody Two Shoes is on the case and is working hard to help the poor prince find his true love. But it is a lot to ask. Where on earth will she find someone who can see through that gruff exterior and fall in love.

I mean, who could possibly fall in love with a Beast!

This is one of my favorite fairytales and I hope you enjoy our interpretation of Beauty and the Beast as a Pantomime.

Jen Archer

Director

CAST

Belle	Hannah Crowe
The Beast	V Lynch Mathew
Smelle	Jo Bryan
Carlos	Lauren Murphy
Chico	Corinne Hope
Pierre	Annie Wallace
Goody Two Shoes	Loz Foster
Bover Boots	Samantha Wright
Dobbin the Horse	Jess Taylor & Sophie White
Prince Dobbin/Phantom	Olga Yatsenko
Town Crier	Sarah Jane Lennie

Introducing Elizabeth Harrold as Dame Cloudy Bottom

CREW

Director	Jennifer Archer
Producer	Stuart Cannell
Stage Manager	Sarah Jane Lennie
Technical Manager	Annie Wallace
Set Design	Rob Hall
	Benjamin Brown
Stage Crew	Rob Hall /Benjamin Brown
	Rachel Chadwick /Simon Vause
Props	Mags Fenton
Make up	Laura Gardener
Lighting	Simon Parkin
Sound	Adam Ion
Marketing	Stephen Lewyckyj
Front of House	Jonathan King
Photography	Barry Pritchard

A big thank you to members and friends of Chorlton Players who have helped along the way.